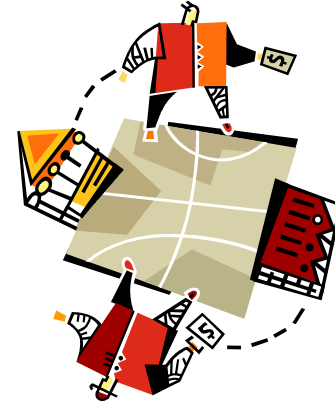


## Declaring or Changing Minors

The BA degree requires a minor outside the academic discipline of the major, and some BS degrees require minors as well. So a BA English student must have a minor from outside the English department. The minor can be from a College outside the College of the major. As the advisor you can find the requirements for all minors in the *Undergraduate Bulletin*, and there are programs of study for all minors on the [programsofstudy.appstate.edu](http://programsofstudy.appstate.edu) website under the department. Remember that majors, core/gen ed, and minors must all have the same catalog year, so when you are looking for the requirements for a minor, make sure you are searching the correct catalog year.



**To declare a minor:** Students who have already declared their majors in the College of Arts & Sciences, should complete the Change of Program form found at: <http://cas.appstate.edu/students/student-forms>. The completed form should be taken to the Dean's Office in 100 I. G. Greer Hall. Students who have declared majors in other colleges should complete the Change of Major/Minor form for the college of their major and turn it in to the dean's office of their major.

**To change a minor:** Students who have already declared their minors may wish to change them. Students complete the same Change of Program (or Change of Major form for other colleges) form they used to declare the minor and turn it in to the appropriate dean's office.

College of Arts & Sciences  
Main Office: 262-3076

For questions regarding students with last names:

A-D	Misty Pitts
x3131	pittsma
E-K	Bethanie Campbell
x7608	campbellbm1
L-Q	Tina Beshears
x8630	beshearskk
R-Z	Diana Nelson
x3077	nelsondj

### Early Intervention Team

The Early Intervention Team is a faculty and staff-led entity, with consultation from [Counseling and Psychological Services](#), the [Student Wellness Center](#), the [Institute for Health and Human Services](#), the [Learning Assistance Program](#), the [University College Academic Advising and Orientation Center](#) and a number of other units and campus personnel. The team's main function is to meet with students who are showing signs of difficulty with university life and who have been referred by faculty or staff. Students may make referrals through a faculty member. The meetings with referred students are non-disciplinary and are intended to offer support and connect students with resources that can assist them to become healthier and more productive members of the community.

The Early Intervention Team is not intended to substitute for faculty and staff conversations with students or to take the place of referrals to the Counseling Center. Rather, when relevant, it is hoped that faculty and staff, contacting the Early Intervention Team will simultaneously encourage students to visit the Counseling Center or that the Early Intervention Team will be used as an additional resource.